

# Bay City Public Schools Annual School Improvement Report

## McAlear Sawden Elementary 2004-2005

*Accredited by the State of Michigan  
~Education YES! Grade "B"~*

*Staff....Students....Success*

### Mission

McAlear Sawden Elementary, a partnership of staff, students and the community will provide a safe learning environment which will meet the educational, physical, and emotional needs of students so they will become members of society who are caring, involved, responsible, productive and successful.

### *McAlear Sawden at a Glance...*

**Enrollment:** 578

### **Professional Staff:**

**Teachers:** 30

**Administrators:** 1.5

**Secretaries:** 2

**Instructional Support:** 5

**Custodians:** 2.25

**School Service Worker:** 1

**Physical Ed Teacher:** 1

**Speech Therapist:** 1

**Foreign Language:** 1

**Media Teacher:** 1

**Art Teacher:** 1

**Music Teacher:** 1

### SCHOOL IMPROVEMENT

McAlear Sawden Elementary staff continues to assess our reading and math data to determine areas in need of improvement

During the 2005-2006 school year, the School Improvement Team will study the disaggregated data and develop a process to address this information.

### **Progress of Goals 2004-2005**

**GOAL #1** - All K-5 teachers will implement instructional strategies to support improvement in Mathematics, especially in the area of probability and problem solving.

- A. Analysis of Benchmark test and MEAP
- B. Teachers developed and implemented strategies in Mathematics. Several staff meetings and PD sessions were devoted to this process

**GOAL #2** - All K-5 teachers will utilize Homelinks/Study Links to support the Everyday Math Program through active parents communication.

- A. Use of support materials
- B. Materials were beneficial to reinforce Math curriculum and promote communication of Math curriculum and student progress to parents.

**GOAL#3** - All K-5 teachers will receive PD on data driven instruction.

- A. Analysis of benchmark tests and MEAP
- B. Implemented partially due to availability of Math Implementer. Continue to work on this strategy with help from district Math Implementers.

## **Added Components Of Our School Improvement Plan:**

### **Role of Community Education:**

Many Community Education Programs are offered to students as after school hour activities. These serve as an extension of our school program.

### **Role of the Library System:**

Our students are involved in a summer reading program offered by our county library system. Puppet shows are performed for our students by the county library staff.

### **Role of Volunteers and Community Resources:**

McAlear Sawden Elementary School has a long tradition of community involvement. Volunteer Coordinators in the school assist in involving over 300 adult volunteers who in various ways support the activities in the school. These services are realized as library aides, tutors, project aides, speakers, liaisons to community businesses and organizations, and fundraisers for materials that support the curriculum. Furthermore, partnerships and working relationships are established with community businesses and other institutions (i.e. Dow Corning, Bay City Mall, Math-Science Center, local colleges, and the ISD.).

### **Building Level Decision Making:**

The school improvement process at McAlear Sawden School reflected a collaborative effort involving district personnel, building administrators, teachers, parents and community members. Building administrators attended monthly meeting conducted by the Quality School Improvement Office. At these meeting frameworks were developed for meetings with the building staff. Teachers met monthly and examined the school improvement process, reviewed data, discussed best practices, set goals, and came to consensus on the entire plan. They worked as a whole staff, in grade level groups, and cross grade level groups. The teaching staff also took part in professional development activities that will support the strategies of the school improvement plan.

### **Identification of Adult Roles:**

Students in the Bay City Public Schools will be literate in each content area and able to live and work in a global environment.

### **Identification of Education Skills:**

Students in the Bay City Public Schools will learn the district's adopted core curriculum aligned with the Michigan State Standards and Benchmarks. Students who participate in the district's educational program will also have developed these additional skills:

- (1) self esteem as a learner, (2) self direction as a learner, (3) understanding of value and role in a democratic society, and
- (4) problem solving, decision making, group process, and accountability.

### **School Curriculum Providing Pupils with Education & Skills:**

The Bay City Public Schools is actively engaged in the process of core curriculum alignment with state standards and benchmarks. Committees representing teachers, principals, parents, and students are actively engaged in review of the curriculum and related resources each year. During the 1999-2000 school year, K-12 Social Studies, 6-12 Science, and 6-8 Mathematics underwent study and revision. During the 2000-2001 school year, the focus was on K-12 Science and 6-12 English Language Arts.

### **Identification of Changes Needed:**

Goal 1: All K-5 teachers will implement instructional strategies to support improvement in Mathematics, especially in the area of probability and problem solving.

Goal 2: All K-5 teachers will utilize Homelinks/Study Links to support the Everyday Math Program through active parent communication.

Goal 3: All K-5 teachers will receive PD on data driven instruction.

### **Development of Alternative Manner of Assessment:**

McAlear Sawden Elementary School, with support from the Bay City Public Schools' Quality School Improvement and Quality Assessment and Planning Offices, uses several alternative assessments. These include MLPP, benchmark assessments in reading and math, and teacher developed assessments in addition to MEAP and Terra Nova.

### **Effective Technology:**

McAlear Sawden Elementary School Staff continues to understand the importance of integrating technology into the curriculum. Student computer stations are established in every classroom as well as a computer lab in the media center. The staff continues to evaluate hardware and software needs. Use of the Internet as a research tool is being pursued, and all classrooms, the computer lab, and the library have been upgraded and have Internet access.

### **On the Job Learning:**

McAlear Sawden Elementary School continues to use community people and resources to share with students adult roles and job responsibilities. Instructional lessons are intentionally designed to help students understand the relationship between the skills taught in the classroom and their application to the real world.

## Student Attendance Rate

This is the percentage of McAlear Sawden students who attend school daily.

<b>2004-05</b>	<b>2003-04</b>	<b>2002-03</b>
<b>95.49%</b>	<b>96.03%</b>	<b>93.80%</b>

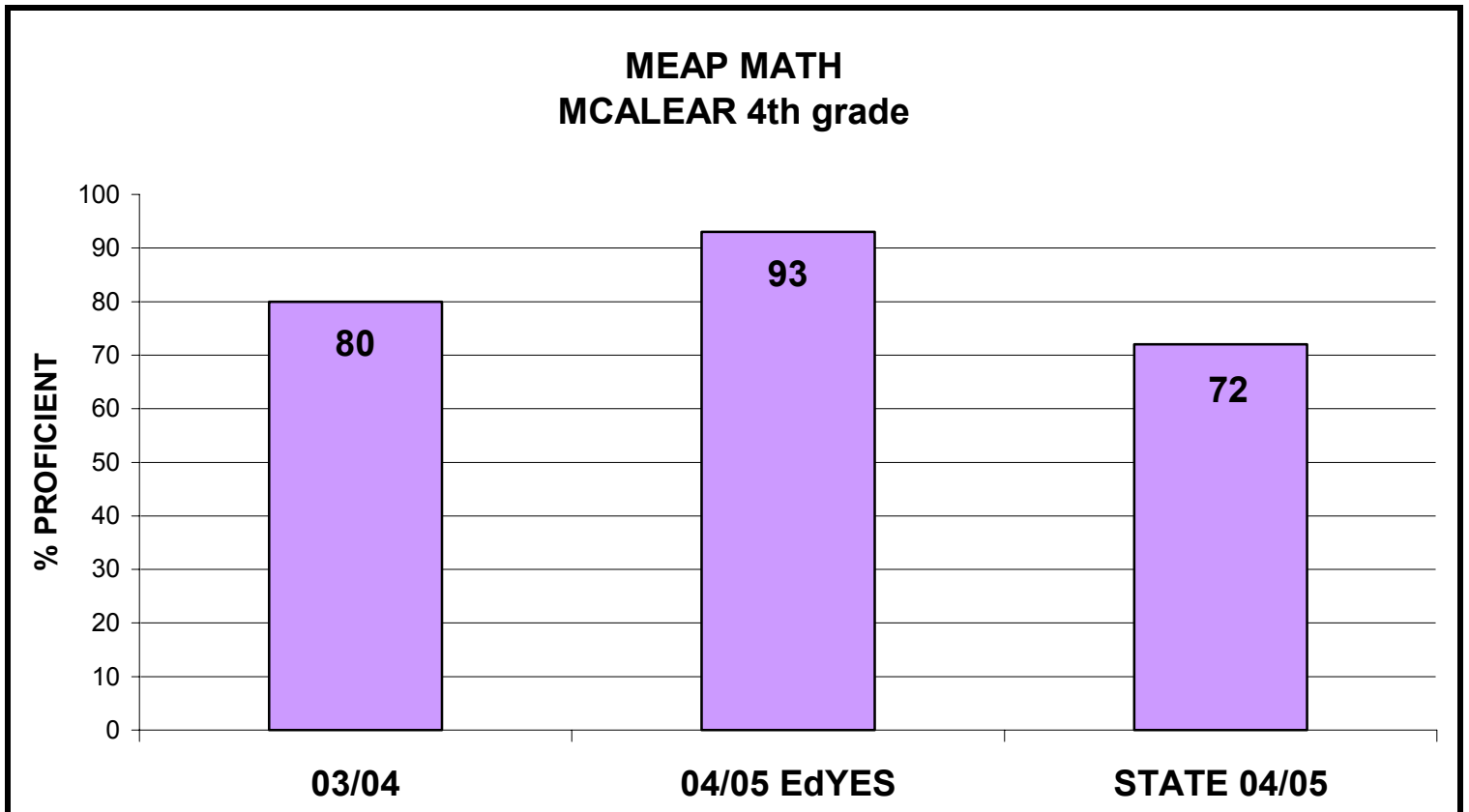
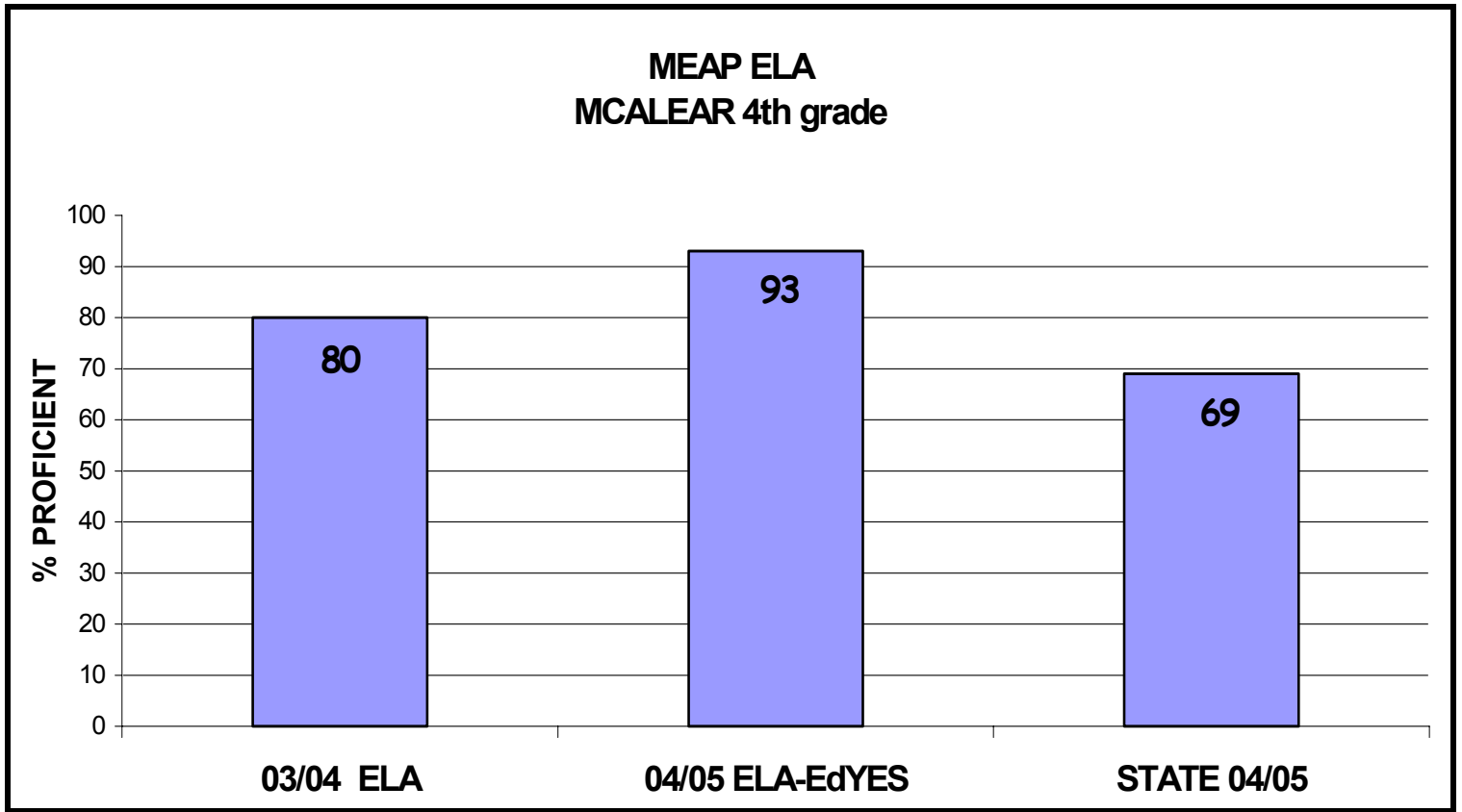
Percentage of parents attending our Parent/Teacher Conferences for the past three years :

<b>Year</b>	<b>Fall</b>	<b>Spring</b>
<b>2002-03</b>	<b>92%</b>	<b>92%</b>
<b>2003-04</b>	<b>93%</b>	<b>91%</b>
<b>2004-05</b>	<b>99%</b>	<b>98%</b>

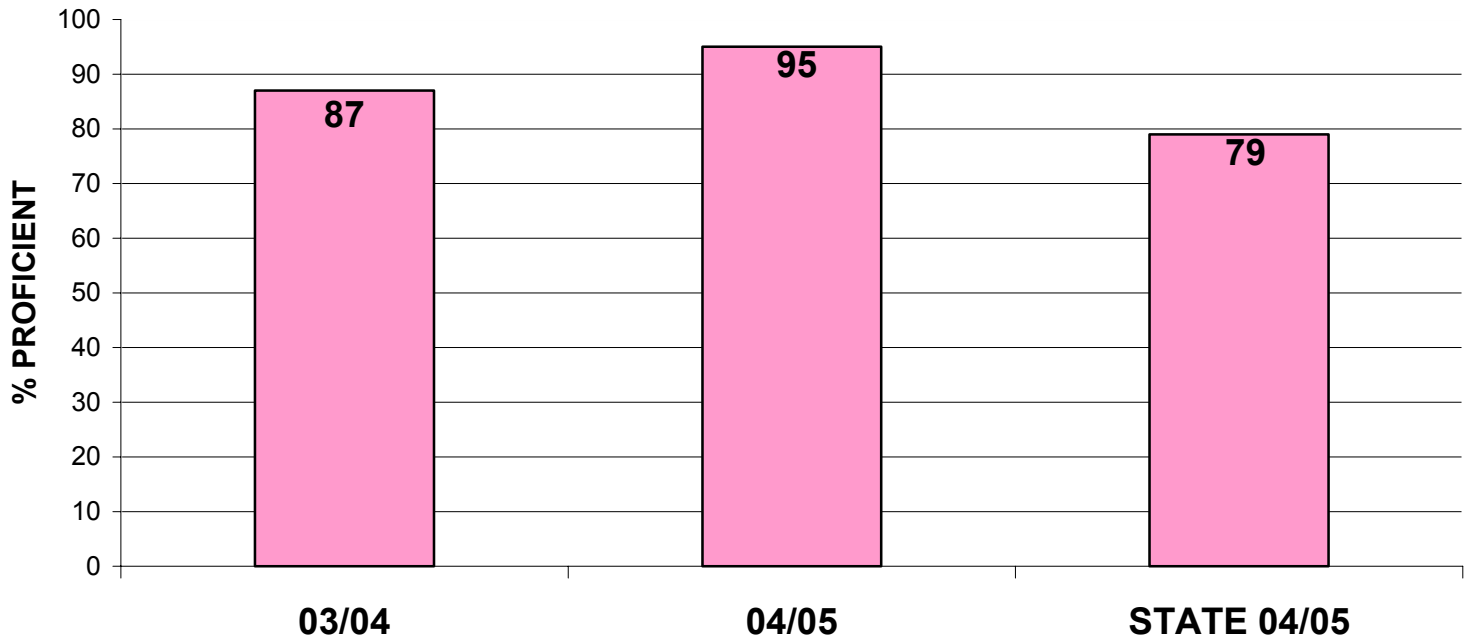
## HOW ARE OUR STUDENTS ACHIEVING?

<b>MEAP Results Disaggregated by Subgroups</b>												
<b>McAlear Elementary</b>	<b>Math - 4th</b>			<b>ELA - 4th</b>			<b>Sci. - 5th</b>			<b>So St. - 5th</b>		
			<b>EdYES</b>			<b>EdYES</b>						
	<b>2003</b>	<b>2004</b>	<b>2005</b>	<b>2003</b>	<b>2004</b>	<b>2005</b>	<b>2003</b>	<b>2004</b>	<b>2005</b>	<b>2003</b>	<b>2004</b>	<b>2005</b>
<b>All</b>	57	80	93	56	80	93	88	87	95	31	39	40
<b>Male</b>	54	83	76	49	80	67	93	93	98	32	36	40
<b>Female</b>	58	78	81	62	80	83	80	82	92	30	41	40
<b>Am. Ind.</b>												
<b>Asian</b>			100			100						
<b>Black</b>												
<b>Hispanic</b>			100			100						
<b>White</b>	57	82	93	55	82	93	88	87	95	32	38	40
<b>Multi-Racial</b>												
<b>No Econ Disadvantaged</b>	64	79	87	64	81	81	88	88	96	36	39	50
<b>Economic Disadvantaged</b>	32	84	90	24	79	86	88	83	94	19	38	16
<b>LEP</b>			100			100						
<b>Sp. Ed.</b>	8		67	8		50	73	47	80	9	13	0

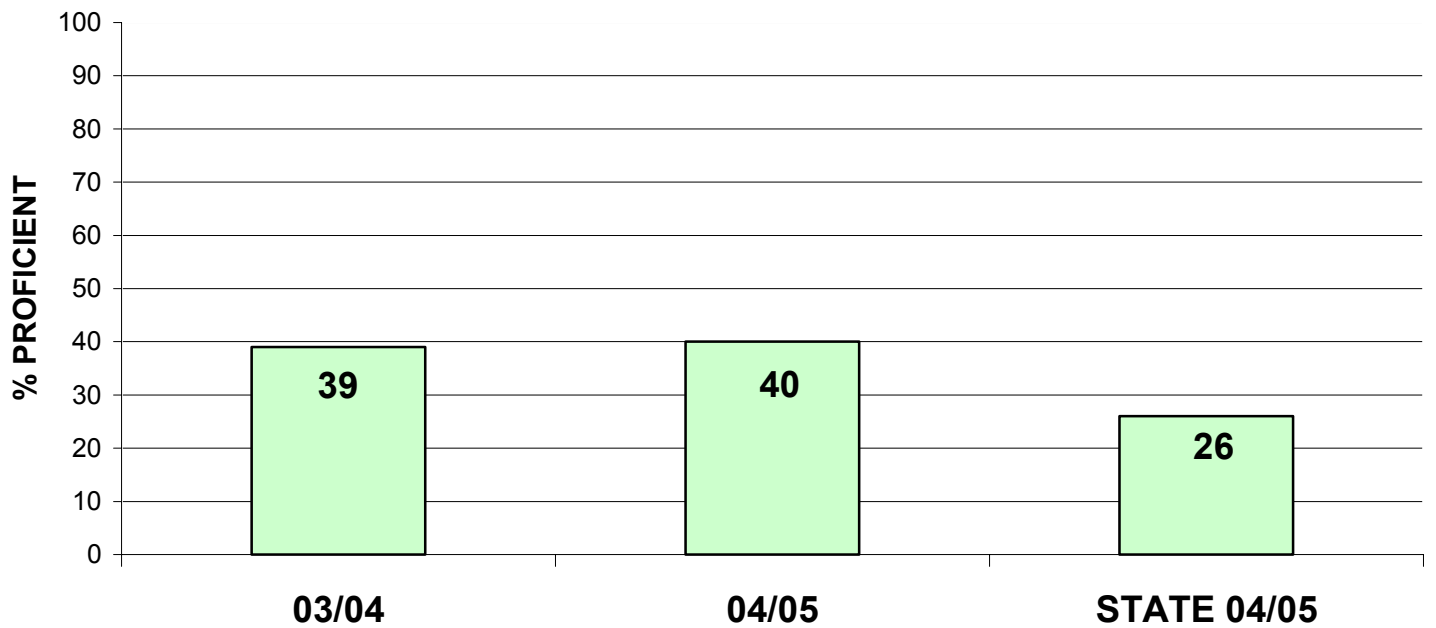
# MEAP Results—Two Year History with State Comparison



**MEAP SCIENCE  
MCALEAR 5th grade**



**MEAP SOCIAL STUDIES  
MCALEAR 5th grade**



## **Bay City Public Schools Parent Involvement Policy**

In accordance with No Child Left Behind Act, the Bay City Board of Education encourages parent/guardian participation in Title I

programs by offering substantial and meaningful opportunities to participate in the education of their children.

The Board directs the following: (Summation)

- Parent/guardian involvement in planning, implementation and evaluation, and improvement of Title I programs/services through participation on building School Improvement Teams
- Invitations to attend at least an annual meeting, with additional meeting opportunities being available as needed, designed to provide Title I information/program services, and to solicit suggestions on program development, planning, evaluation and operation
- Assistance in understanding Title I
- Notification of Title I student selection and criteria for selection
- Information regarding child's achievement and progress
- A provision for input by Title I staff at parent/guardian-teacher conferences
- Opportunities to enhance the capacity to work with children in the home on school learning
- Professional development opportunities for teachers and staff to enhance their understanding of effective parent/guardian involvement strategies
- Ongoing communication
- Other appropriate activities (ie. Family Math Nights, etc.)

### **Bay City Public Schools Parent Involvement Written Plan Policy (Summation)**

The Bay City Public School District, as a recipient of Title I funds, hereby, adopts the following policy statement regarding the development of a District-wide plan for parental/guardian involvement in the development of a Title I plan, and directs the administration to:

- Involve parents/guardians in the development of the plan
- Develop a plan that provides for the involvement of parents/guardians in the Title I activities
- Provide the necessary technical, research, staff and administrative support to schools in the planning and implementing of effective parental/guardian involvement activities to improve student academic achievement and school performance
- Integrate/coordinate plans/policies for parental/guardian involvement in Title I programs with parental/guardian involvement in other programs, including but not limited to Head Start
- Review/evaluate the District's plan annually and share the results with the Board
- Assure that the policy/plan contains a compact that outlines how parents/guardians, the school staff and students will share the responsibility of improved student achievement
- Distribute District plan to parents/guardians of participating children & the local community

### **Migrant Education Program (MEP) Parent Guardian Involvement**

Parents/guardians of students in MEP will be involved in, and regularly consulted, about the development, implementation, operation and evaluation of the program.

### **Limited English Proficiency (LEP) Parent/Guardian Involvement (Summation)**

Parents/guardians of LEP students will be provided notice regarding their child's placement in and information about the District's LEP program. Notification of their rights regarding the programs content and participation, including the right to choose among programs if alternatives are available will also be provided. The notice must also:

- Include an explanation of the value of the program in terms of academic development, mastery of English, and the achievement of promotion and graduation standards.
- Include an explanation of the right to remove the child from an LEP program and to place the child in the regular program.
- Be in a format families can comprehend and, if possible, in a language understood by the family.

# **CORE CURRICULUM**

During the 2003-04 school year, the Bay City Public Schools made progress in the four core curriculum areas.

## **English/Language Arts**

The English/Language Arts curriculum for K-11 was implemented through a professional development model of in-service teachers for grades K-11. District designed benchmarks assessments were developed and implemented to assess grade level expectations. Work continued towards the district goal of 90% of all third graders reading on grade level. Based on our DRA score, 77% of our third graders are reading at grade level. The K-12 ELA committee met on a quarterly basis to discuss curriculum, instruction and assessment.

## **Math**

The Mathematics curriculum for K-10 is in place and supported by providing in-service for K-5 elementary teachers and support staff. District designed math benchmark assessments we administered to students in grades K-10. The K-12 Math committee met on a quarterly basis to discuss curriculum, instruction and assessment.

## **Science**

The Science curriculum for K-10 is in place and supported by providing science kit training sessions for new teachers in grades K through 7. The Science Center provides a hands-on science program for over 6,000 district students. The K-12 Science committee met on a quarterly basis to discuss curriculum, instruction and assessment.

## **Social Studies**

The Social Studies curriculum for grades K-12 is in place and supported by purchasing new textbooks for High School Government and Global Studies. In-service was provided for the teachers using this new resource to deliver grade level benchmarks. The K-12 Social Studies Committee met on a quarterly basis to discuss curriculum, instruction and assessment.

# **PARENT INFORMATION**

McAlear Sawden Elementary has a very active parent group headed by our Volunteer Coordinators that participates in both academic and extra-curricular activities. Approximately 418 volunteers are in our building annually to perform various tasks and projects that total approximately 8599 hours. Some examples are: Parent Advisory Meetings, Library Aides, Tutors, Computer Lab Aides, Field Trip Chaperones, Fund raiser Helpers, and Classroom Helpers.

## **ACCREDITATION**

**McAlear Sawden Elementary is accredited by the State of Michigan  
based on the Education YES! Report .  
Our Report Card Grade from the State was a “B.”**

## **SPECIALIZED SCHOOLS**

McAlear-Sawden Elementary School offers a cluster classroom in grades 1, 2, 3, 4, and 5 as part of the district's "Gifted & Talented Program" (G/T). The Gifted and Talented Program is specially designed to serve the educational and social-emotional needs of our academically advanced learners. For more information about the Gifted and Talented program, please contact Sue Murphy, Director, at 989/671-8180.

Two Resource Room classrooms and one self-contained, cognitive Impaired classroom are offered at McAlear-Sawden as part of the Special Education Program.

## **SPECIAL SCHOOL PROGRAMS**

Presidential Academic Awards \*Mini-Society \*Creative Writing Program \*Honor Roll Recognition \*Pen Pals Program \*Fire Awareness/Prevention Program \*Cub Scout Program \* Girl Scout Program \*Community Education Sports Program \*MEAP Awards Program \*Classroom Productions \*Presidential Physical Fitness Program \*Professional Author Visitations \*Expanded Community Education Program \*Parent Volunteer Program \*School Spirit Days \*Read-A-Thon Program \*Outdoor Education Program \*Parent Advisory Council \*Smart Moves Program \*Career Presentations \* 5th Grade Service Squad, \*Art Goes to School, \*Student Council, and \*Cultural Diversity Program

More information about any of the topics covered in this report is available by calling:

Mr. James Cain,  
Principal,  
McAlear-Sawden Elementary School.  
989/684-7702  
cainj@bcschools.net